

Master National Events 2010 - 2012: Dogs Run, Passes and Handler Status

In this analysis we examine the last three Master National events and the unprecedented growth we have experienced from 2010 to 2012. This is part of our continuing effort to better plan for future events and identify the forces driving both growth and impacting individual event management. This analysis focuses on growth in entries, the composition of entries, various pass rates and the availability of manpower resources as the event unfolds.

Table-1

Year	Ran	Qualified	%
2010	346	180	52.0%
2011	569	258	45.3%
2012	690	221	32.0%

Table-2 (Percent of Total Qualified)

Qualifiers by Handler Status			
Pro	%	Amateur	%
98	54.4%	82	45.6% (2010)
166	64.3%	92	35.7% (2011)
168	76.0%	53	24.0% (2012)

Table-3

Year	Ran	Dogs Run by Handler Status: % of Total				Qualifiers within Group			
		Pro	%	Amateur	%	Pro	%	Amateur	%
2010	346	177	51.2%	169	48.8%	98	55.4%	82	48.5%
2011	569	337	59.2%	231	40.6%	166	49.3%	92	39.8%
2012	690	441	63.9%	249	36.1%	168	38.1%	53	21.3%

Table-4

Year	Ran	Dogs Run by Handler Status; Growth from Previous Year				% change from 2010			
		Pro	%	Amateur	%	Pro	Amateur		
2010	346	177		169		177	169		
2011	569	64.5%	337	90.4%	231	36.7%	337	90.4%	231 36.7%
2012	690	21.3%	441	30.9%	249	7.8%	441	149.2%	249 47.3%

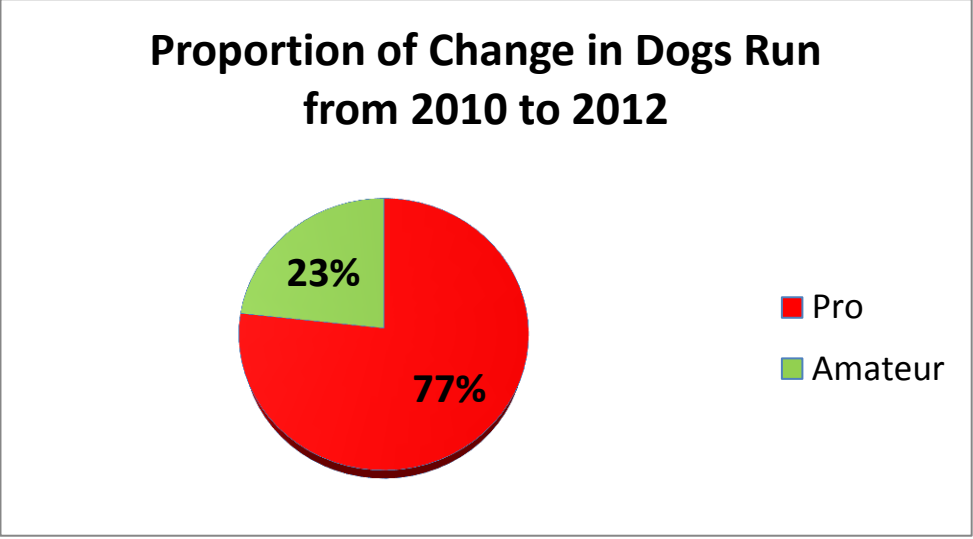
Table-5

2012	N	Average # Dogs
Pro	97	4.5
Amateur	143	1.7

Table-6

Dog Increase from 2010 2012		
Pro	Amateur	Total
264	80	344
76.7%	23.3%	

Chart-1



2012 Master National Passes by Flight and Handler Status

					Handler (% of Total Qualified)			
					Pro	%	Amateur	%
A Flight								
180								
1 Retired	A	171	52	30.4%	37	71.2%	15	28.8%
3 Moved	B	174	64	36.8%	54	84.4%	10	15.6%
5 Scratch	C	176	50	28.4%	43	86.0%	7	14.0%
171 Ran	D	169	55	32.5%	34	61.8%	21	38.2%
	Total	690	221	32.0%	168	76.0%	53	24.0%

B Flight
181
1 Retired
6 Scratch

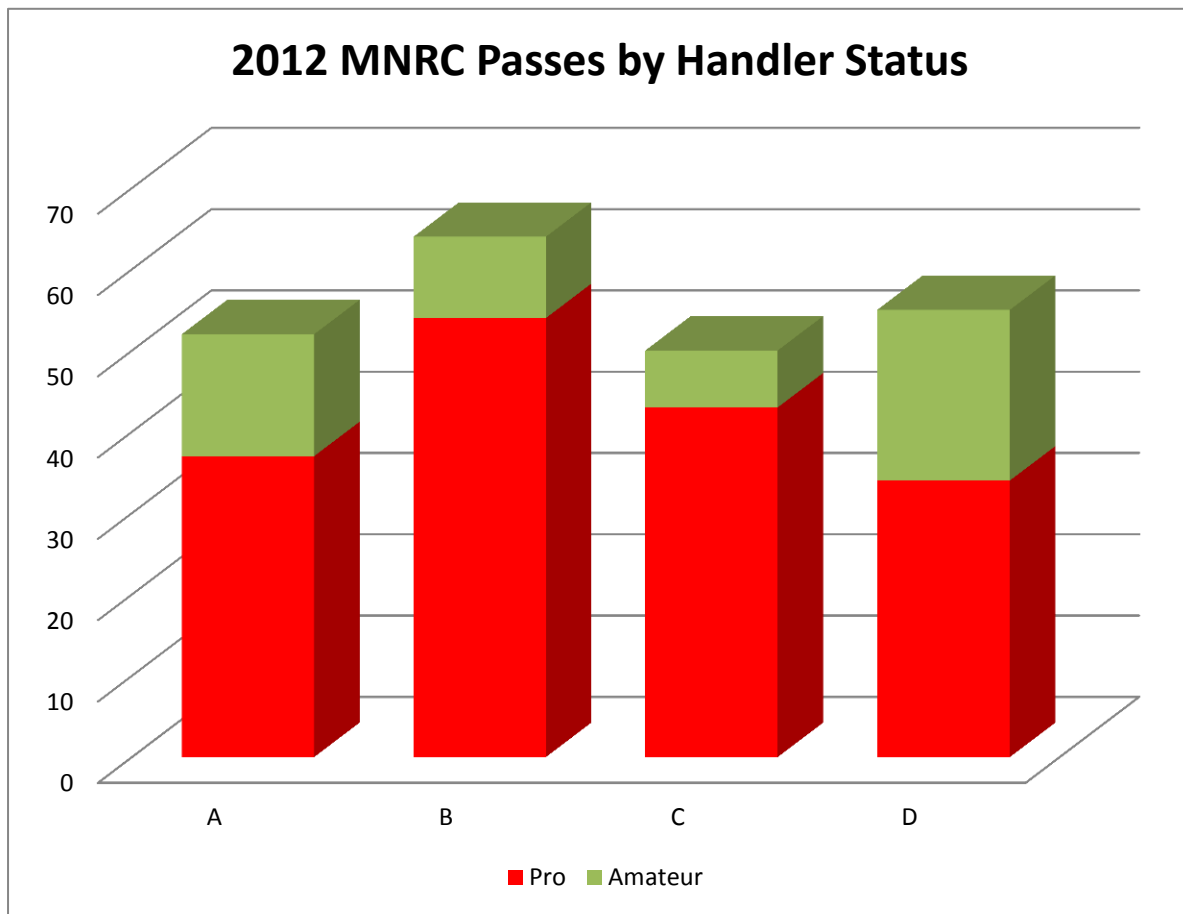
174 Ran

C Flight
182
1 Retired
5 Scratch

176 Ran

D Flight
179
1 Retired
9 Scratched

169 Ran

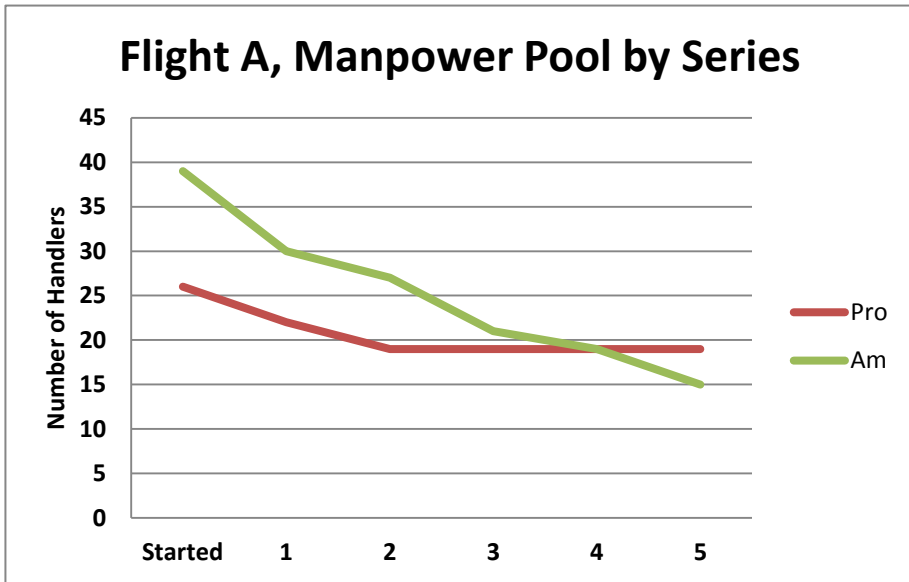


	Dogs Started	
	Pro	Amateur
690	441	249
	64%	36%

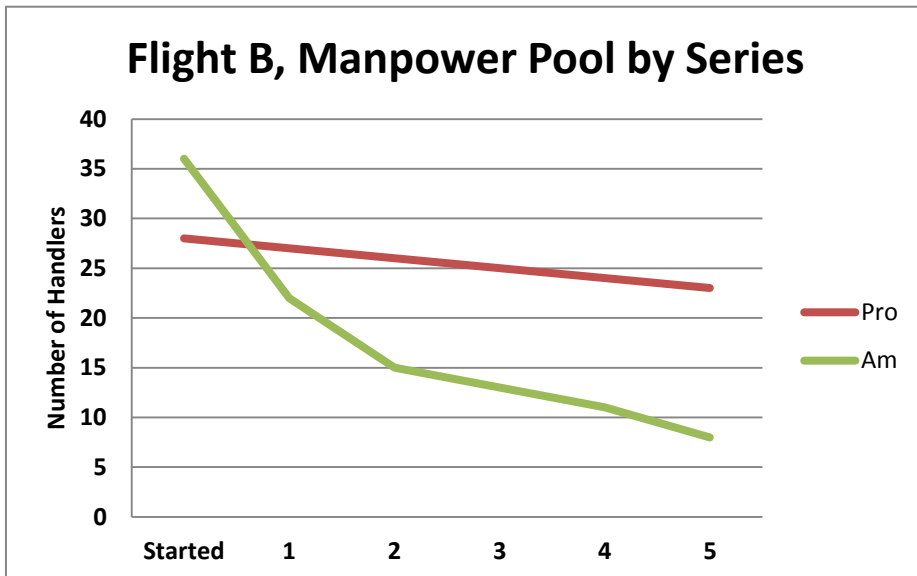
Dogs Qualified within group		
	Pro	Amateur
	168	53
	38.1%	21.3%

Number of Handlers by Type and Series

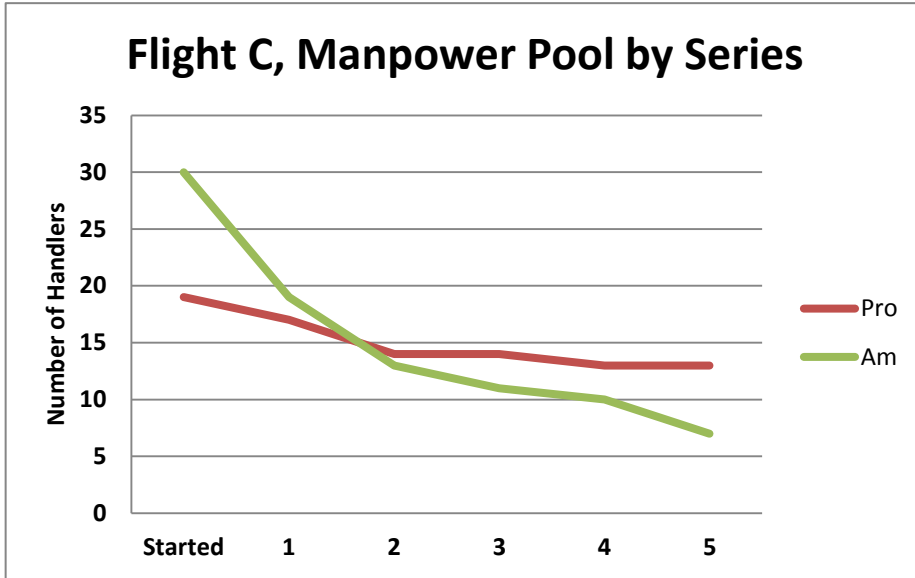
Flight	Started	At End of Series					
		1	2	3	4	5	
A	Pro	26	22	19	19	19	19
	Am	39	30	27	21	19	15



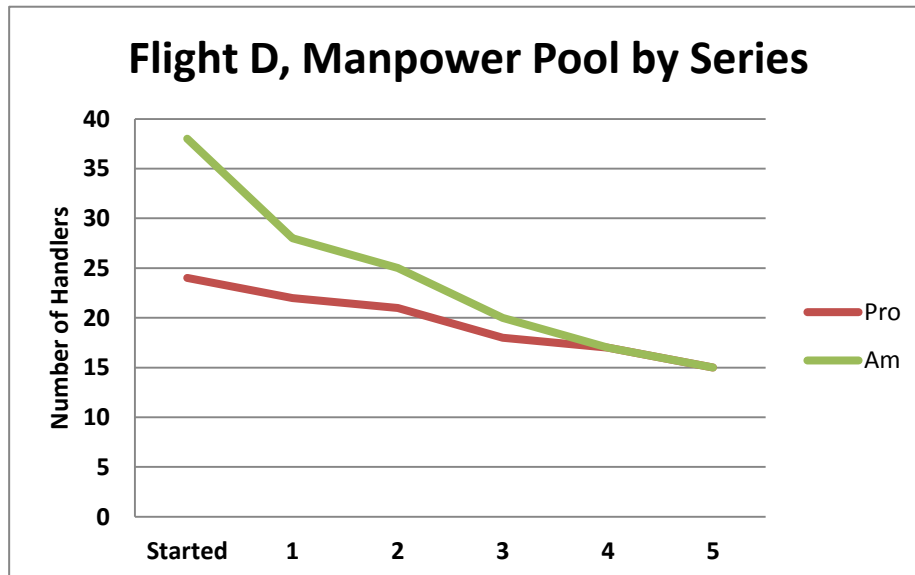
Flight	Started	At End of Series					
		1	2	3	4	5	
B	Pro	28	27	26	25	24	23
	Am	36	22	15	13	11	8



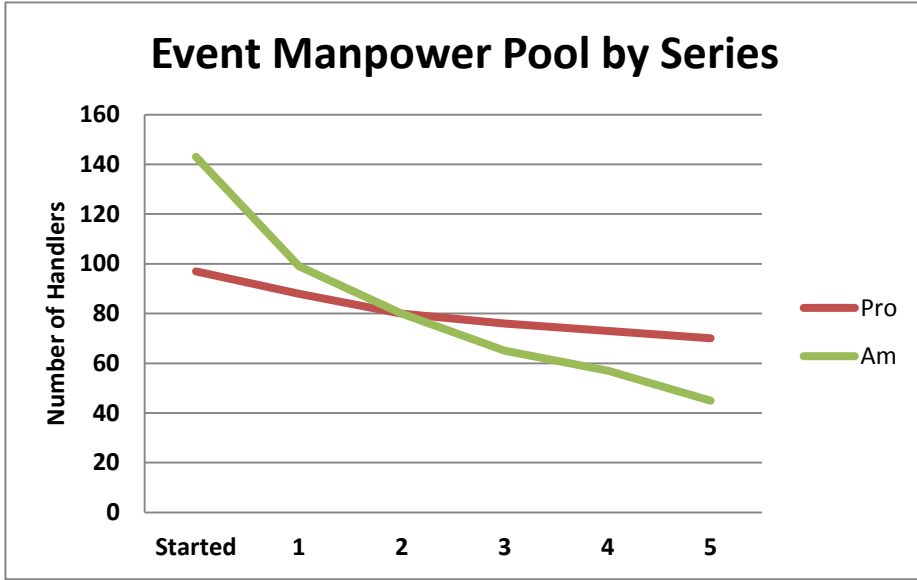
	Started	At End of Series				
		1	2	3	4	5
C						
Pro	19	17	14	14	13	13
Am	30	19	13	11	10	7



	Started	At End of Series				
		1	2	3	4	5
D						
Pro	24	22	21	18	17	15
Am	38	28	25	20	17	15



Event	Started	At End of Series				
		1	2	3	4	5
Pro	97	88	80	76	73	70
Am	143	99	80	65	57	45

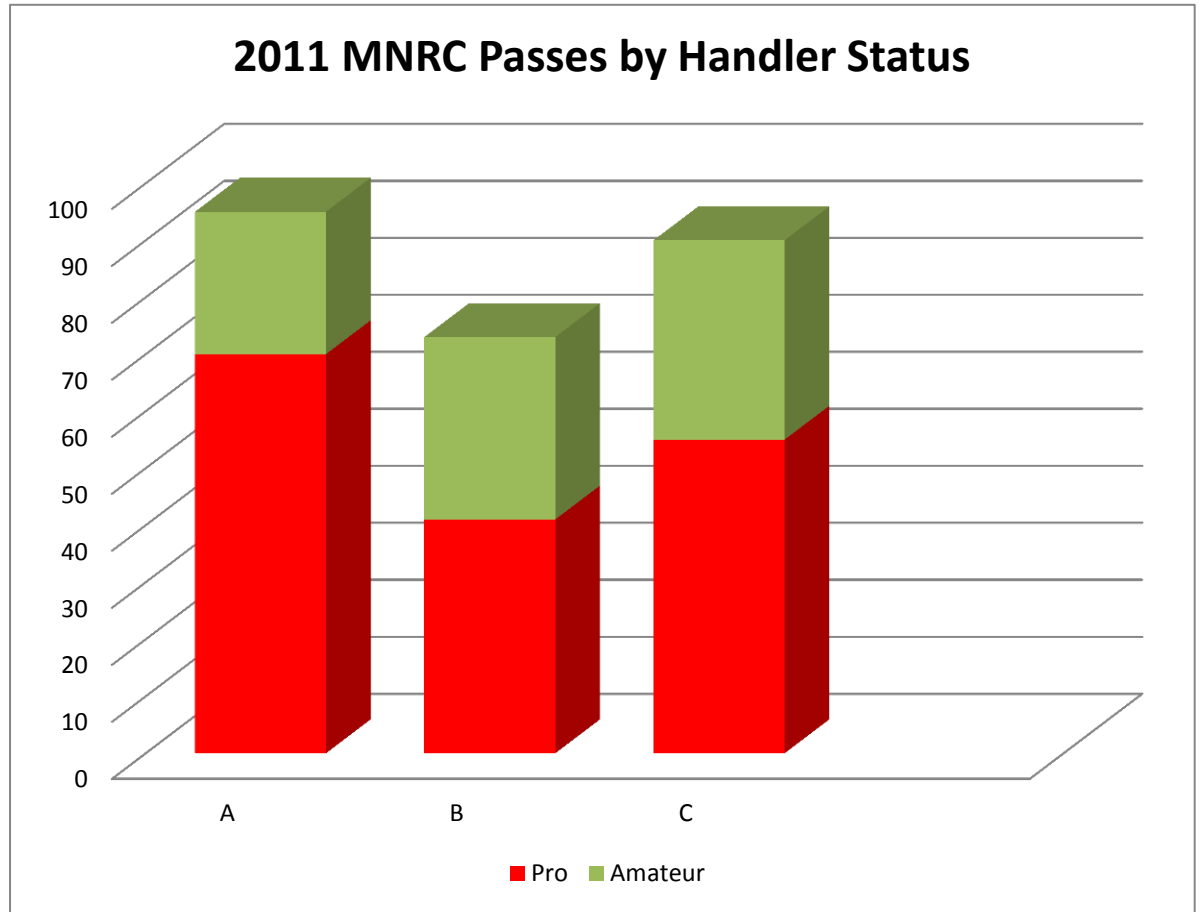


2011 Master National Passes by Flight and Handler Status

A Flight 193	Flight	Ran	Qualified	%	Handler (% of Total Qualifiers)			
					Pro	%	Amateur	%
	A	193	95	49.2%	70	73.7%	25	26.3%
	B	185	73	39.5%	41	56.2%	32	43.8%
	C	191	90	47.1%	55	61.1%	35	38.9%
Total		569	258	45.3%	166	64.3%	92	35.7%

B Flight
185

C Flight
191



Dogs Started

	Pro	Amateur
569	337	231
	59.2%	40.6%

Dogs Qualified within Group

	Pro	Amateur
	166	92
	49.3%	39.8%

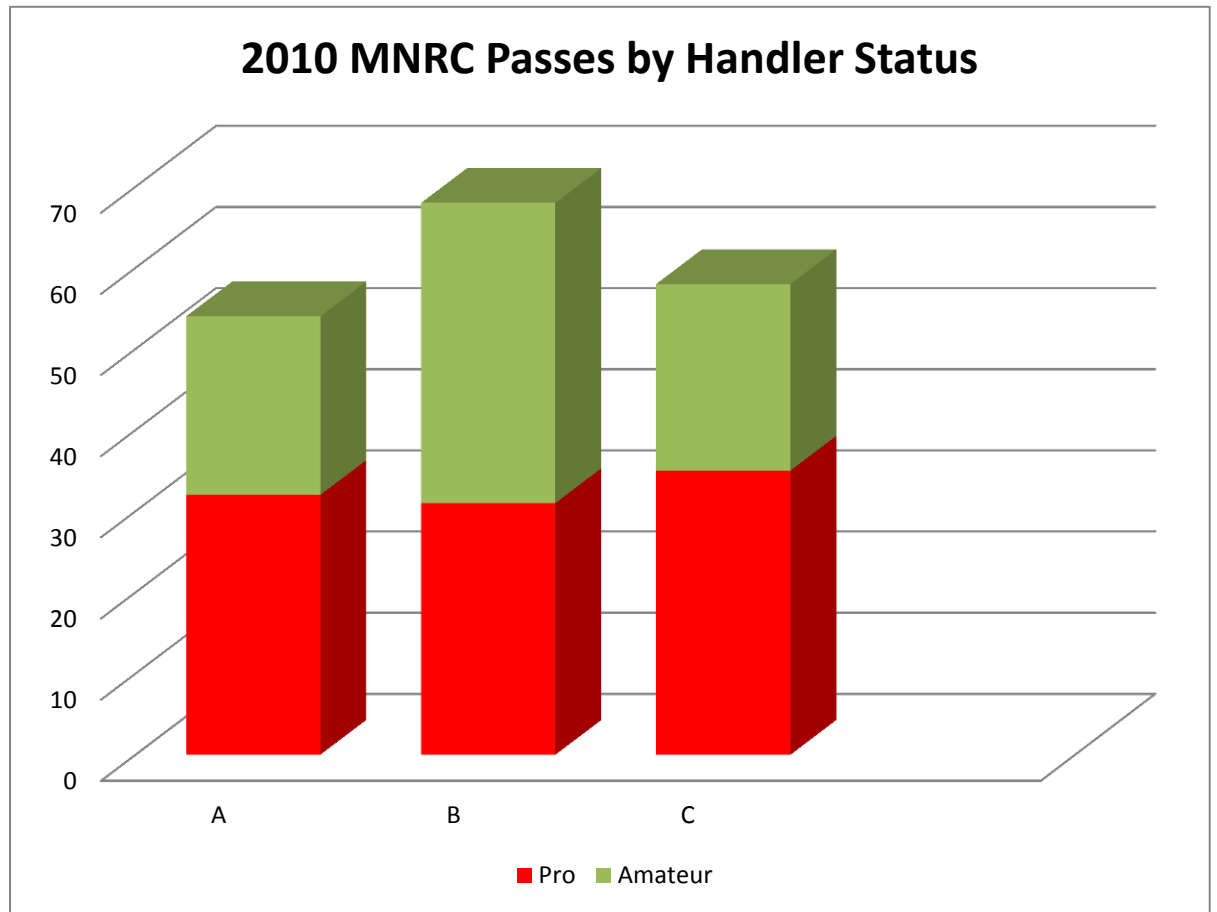
Flight	Ran	Pro	%	Am	%
A	193	123	63.7%	70	36.3%
B	185	106	57.3%	79	42.7%
C	191	108	56.5%	82	42.9%
Total	569	337	59.2%	231	40.6%

2010 Master National Passes by Flight and Handler Status

A Flight		B Flight		C Flight		Total	
Flight	Ran	Qualified	%	Pro	%	Amateur	%
A	117	54	46.2%	32	59.3%	22	40.7%
B	117	68	58.1%	31	45.6%	37	54.4%
C	112	58	51.8%	35	60.3%	23	39.7%
Total	346	180	52.0%	98	54.4%	82	45.6%

B Flight
117

C Flight
112



Dogs Started

	Pro	Amateur
346	177	169
	51.2%	48.8%

Dogs Qualifie

	Pro	Amateur
	98	82
	55.4%	48.5%

Flight	Ran	Pro	%	Am	%
A	117	59	50.4%	58	49.6%
B	117	58	49.6%	59	50.4%
C	112	60	53.6%	52	46.4%
Total	346	177	51.2%	169	48.8%